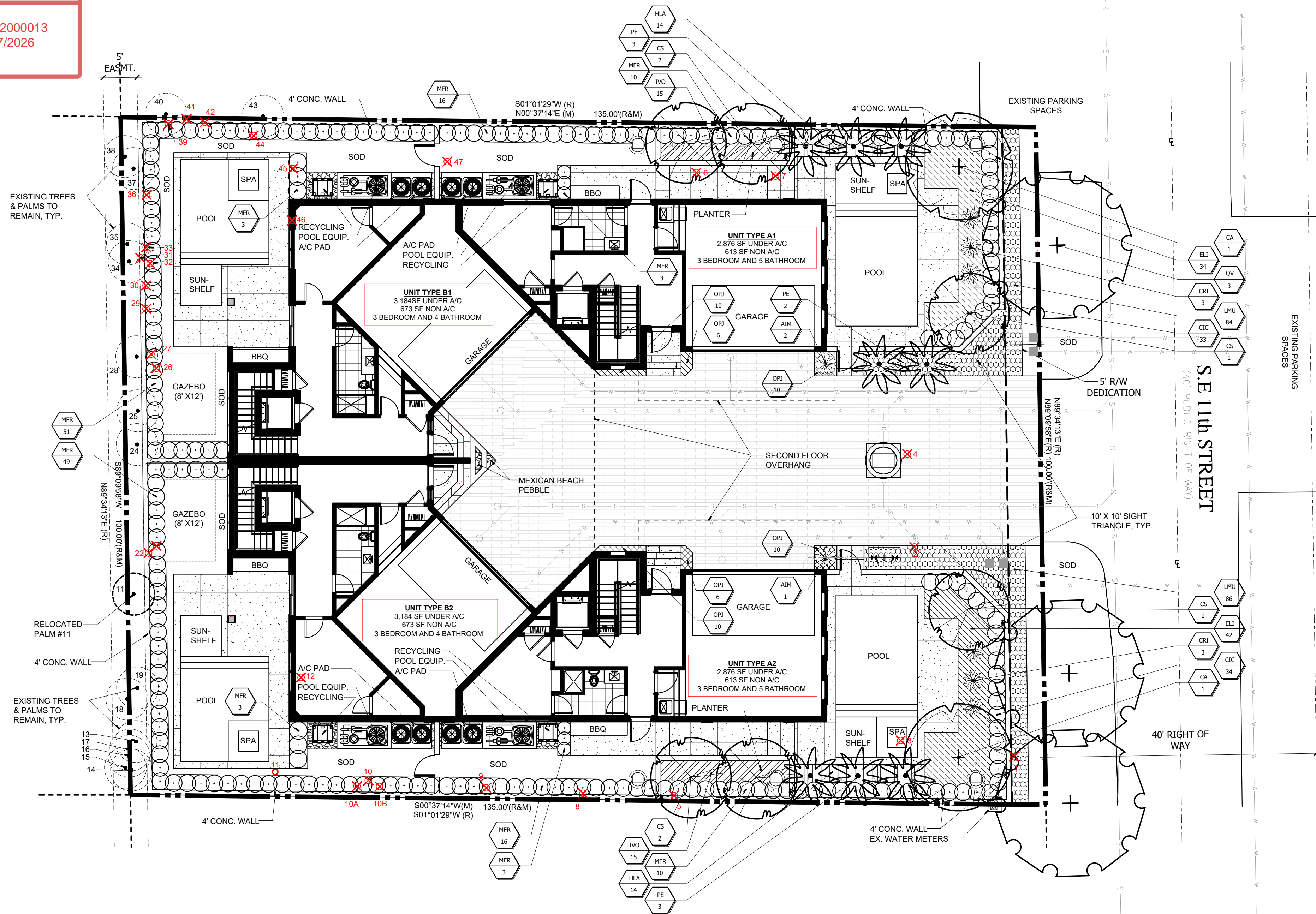


DRC

PZ26-12000013  
06/17/2026

TREE DISPOSITION TABLE

NO.	BOTANICAL NAME	COMMON NAME	DISPOSITION	CONDITION/REMARKS	DBH (IN)	HEIGHT (FT)	SPREAD (FT)	REMOVAL/MITIGATION PALM (1:1)	REPLACEMENT COST
1	SYAGRUS ROMANOFFIANA	QUEEN PALM	REMOVE	50% CAT. 2 INVASIVE	9	30	16		\$662.55
2	PTYCHOSPERMA ELEGANS	ALEXANDER PALM (CLUSTER)	REMOVE	40%	2	30	10		\$450.00
3	ADONIDIA MERRILLII	CHRISTMAS PALM	REMOVE	50%	4	20	13		\$441.70
4	DYPSSIS LUTESCENS	ARECA PALM	REMOVE	60%	2	20	16		\$198.77
5	ADONIDIA MERRILLII	CHRISTMAS PALM	REMOVE	50%	4	20	13		\$198.77
6	ADONIDIA MERRILLII	CHRISTMAS PALM	REMOVE	45%	3	10	10		\$198.77
7	ADONIDIA MERRILLII	CHRISTMAS PALM	REMOVE	45%	3	10	10		\$198.77
8	ADONIDIA MERRILLII	CHRISTMAS PALM	REMOVE	45%	3	10	10		\$198.77
9	ADONIDIA MERRILLII	CHRISTMAS PALM	REMOVE	45%	3	10	10		\$198.77
10	PTYCHOSPERMA ELEGANS	ALEXANDER PALM	REMOVE	60%	3	25	13		\$450.00
10A	PTYCHOSPERMA ELEGANS	ALEXANDER PALM	REMOVE	60%	3	25	13		\$450.00
10B	SCHINUS TEREBINTHIFOLIA	BRAZILIAN PEPPER	REMOVE	CAT. 1 INVASIVE	4	20	16		0
11	PTYCHOSPERMA ELEGANS	ALEXANDER PALM	RELOCATE	60%	3	25	13		0
12	CUPANOPSIS AMARCO	CARROTWOOD	REMOVE	CAT. 1 INVASIVE	10	25	20		0
13	ADONIDIA MERRILLII	CHRISTMAS PALM	REMAIN	50%	4	25	13		\$409.25
14	ADONIDIA MERRILLII	CHRISTMAS PALM	REMAIN	50%	4	25	13		\$409.25
15	ADONIDIA MERRILLII	CHRISTMAS PALM	REMAIN	OFF-SITE	4	25	13		\$409.25
16	ADONIDIA MERRILLII	CHRISTMAS PALM	REMAIN	50%	4	25	13		\$409.25
17	ADONIDIA MERRILLII	CHRISTMAS PALM	REMAIN	OFF-SITE	4	25	13		\$409.25
18	DYPSSIS LUTESCENS	ARECA PALM	REMAIN	OFF-SITE	2	20	12		\$327.40
19	DYPSSIS LUTESCENS	ARECA PALM	REMAIN	50%	2	20	12		\$327.40
20	ADONIDIA MERRILLII	CHRISTMAS PALM	REMAIN	50%	3	20	13		\$327.40
21	ADONIDIA MERRILLII	CHRISTMAS PALM	REMAIN	50%	3	20	13		\$327.40
22	ADONIDIA MERRILLII	CHRISTMAS PALM	REMAIN	50%	3	20	13		\$327.40
23	FICUS AUREA	STRANGLER FIG	REMOVE	46%	49	30	26		\$5,713.26
24	ADONIDIA MERRILLII	CHRISTMAS PALM	REMAIN	50%	4	25	13		\$409.25
25	ADONIDIA MERRILLII	CHRISTMAS PALM	REMAIN	50%	2	25	16		\$409.25
26	ADONIDIA MERRILLII	CHRISTMAS PALM	REMAIN	50%	3	25	10		\$409.25
27	ADONIDIA MERRILLII	CHRISTMAS PALM	REMAIN	50%	4	25	13		\$409.25
28	ADONIDIA MERRILLII	CHRISTMAS PALM	REMAIN	50%	4	25	16		\$409.25
29	ADONIDIA MERRILLII	CHRISTMAS PALM	REMAIN	50%	4	25	16		\$409.25
30	ADONIDIA MERRILLII	CHRISTMAS PALM	REMAIN	50%	2	25	10		\$409.25
31	ADONIDIA MERRILLII	CHRISTMAS PALM	REMAIN	50%	3	25	13		\$409.25
32	ADONIDIA MERRILLII	CHRISTMAS PALM	REMAIN	50%	2	25	16		\$409.25
33	ADONIDIA MERRILLII	CHRISTMAS PALM	REMAIN	50%	2	25	16		\$409.25
34	ADONIDIA MERRILLII	CHRISTMAS PALM	REMAIN	50%	3	25	16		\$409.25
35	ADONIDIA MERRILLII	CHRISTMAS PALM	REMAIN	50%	4	25	10		\$409.25
36	ADONIDIA MERRILLII	CHRISTMAS PALM	REMAIN	50%	4	25	13		\$409.25
37	ADONIDIA MERRILLII	CHRISTMAS PALM	REMAIN	50%	2	25	16		\$409.25
38	ADONIDIA MERRILLII	CHRISTMAS PALM	REMAIN	50%	3	25	13		\$409.25
39	ADONIDIA MERRILLII	CHRISTMAS PALM	REMAIN	50%	2	25	16		\$409.25
40	ADONIDIA MERRILLII	CHRISTMAS PALM	REMAIN	OFF-SITE	2	25	16		\$409.25
41	ADONIDIA MERRILLII	CHRISTMAS PALM	REMAIN	50%	3	25	10		\$409.25
42	ADONIDIA MERRILLII	CHRISTMAS PALM	REMAIN	50%	3	25	13		\$409.25
43	ADONIDIA MERRILLII	CHRISTMAS PALM	REMAIN	OFF-SITE	3	25	16		\$409.25
44	ROYSTONIA REGIA	ROYAL PALM	REMOVE	60%	10	25	16		\$1,937.55
45	ADONIDIA MERRILLII	CHRISTMAS PALM	REMOVE	50%	3	25	13		\$552.13
46	ADONIDIA MERRILLII	CHRISTMAS PALM	REMOVE	50%	3	25	13		\$552.13
47	LIVISTONA DECIPENS	CHRISTMAS PALM	REMOVE	50%	8	20	13		\$375.00

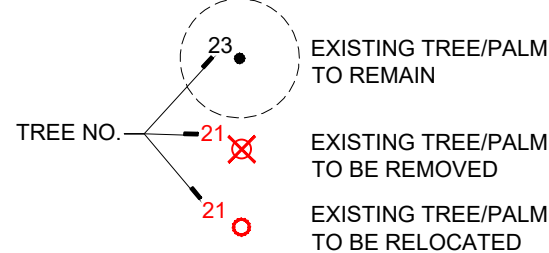
TOTAL MITIGATION VALUE FOR TREES &amp; PALMS \$17,985.95

REMAIN/RELOCATE	REMOVE	TOTAL EXISTING ON-SITE	REPLACEMENT COST
TREES	3	PALMS	TREES
PALMS	*12	*28	*40
TOTAL MITIGATION REQUIRED		28	49
TOTAL PROPOSED MITIGATION CANOPY (5 - SILVER BUTTWOOD) 5' x 4' = 20' CAL. TREES		CALIPER MITIGATION = 20' CAL.	
TOTAL PROPOSED LIVE OAK WITH EXTRA HEIGHT TOWARDS MITIGATION 3' x 4' EXTRA HT. TREES		USE ADDITIONAL HT. IN CODE REQUIRED TREES TO MITIGATE THE REMAINDER 20' CAL. TREE = 20 x \$180 X 2.5 = \$7,200	
LIVE OAK - 12' HT MARKET VALUE		\$300 X 2.5 = \$750	
LIVE OAK - 20' HT MARKET VALUE		\$550 X 2.5 = \$1,375	
TOTAL PROVIDED EXTRA HEIGHT IN ESTIMATED MARKET VALUE (3 x 20' HT. LIVE OAKS) \$1,375 - \$750 = \$625 X 3 = \$1,875		TOTAL PROVIDED ADDITIONAL HT. TOWARDS MITIGATION IN VALUE = \$2,475	
TOTAL PROPOSED REPLACEMENT 14' HT. PALMS		REPLACEMENT COST FOR 20 - 14' HT PALMS MITIGATE THE REMAINDER 20 - 14' PALMS = 20 x (\$180 X 2.5) = \$9,000 MARKET VALUE	
TOTAL MITIGATION DEFICIT TO BE CONTRIBUTED IN LIEU TO TREE FUND \$7,500 + \$9,000 - \$2,475 = \$14,025			

## TREE DISPOSITION NOTES

- TREE DISPOSITION PLAN IS BASED ON ALL AVAILABLE INFORMATION. CONTRACTOR TO REPORT ALL DISCREPANCIES TO LANDSCAPE ARCHITECT FOR REVIEW PRIOR TO CONSTRUCTION/DEMOLITION.
- ALL PITS TO BE FILLED THE SAME DAY OF REMOVAL OF TREES AND/OR PALMS. RESTORE SURFACE WITH SOD OR MULCH TO MATCH EXISTING CONDITIONS.
- CONTRACTOR SHALL VERIFY ALL EXISTING ABOVE AND UNDERGROUND UTILITIES 48 HOURS PRIOR TO ANY ON-SITE EXCAVATION.
- ALL EXISTING TREES/PALMS TO REMAIN SHALL BE PROTECTED PER INDUSTRY STANDARDS. SEE TREE PROTECTION DETAIL ON SHEET LP-2.
- TREE SURVEY DATED 4/16/24, PROVIDED BY: RAHIM VEDAEI, EMAIL: RVDAEE1@YAHOO.COM, PHONE: 954-868-4763.

## EXISTING TREE LEGEND



## PLANT LIST

## TREES

SYM.	QTY	BOTANICAL NAME	COMMON NAME	SIZE	SPACING	REMARKS
* QV	3	QUERCUS VIRGINIANA	LIVE OAK	20' O.A., 10' SPD., 6" CAL.	A.S.	FULL & THICK
* CA	2	CHRYSOPHYLLUM OLIVIFORME	SATIN LEAF	14' O.A., 6' SPD., 4" CAL.	A.S.	FULL & THICK
* CS	6	CONOCARPUS ERECTUS 'SERICEUS'	SILVER BUTTWOOD	14' O.A., 6' SPD., 4" CAL.	A.S.	FULL & THICK

## PALMS

SYM.	QTY	BOTANICAL NAME	COMMON NAME	SIZE	SPACING	REMARKS
PE	8	PTYCHOSPERMA ELEGANS	ALEXANDER PALM	16' O.A., SINGLE TRUNK	A.S.	FULL & THICK, MATCHED

## SHRUBS

SYM.	QTY	BOTANICAL NAME	COMMON NAME	SIZE	SPACING	REMARKS
* MFR	164	MYRSINANTHES FRAGRANS	SIMPSON STOPPER	#7, 36" O.A.	24" O.C.	FULL HEALTHY GROWTH
* CIC	67	CHRYSOBALANUS ICACO	RED-TIP COCOPLUM	#15, 36" X 36"	24" O.C.	FULL HEALTHY GROWTH
* CRI	6	CRINUM ASIATICUM	SPIDER LILY	#3, 14" X 14"	24" O.C.	FULL HEALTHY GROWTH
* HLA	28	HYMENOCALLIS LATIFOLIA	IMPERIAL BROMELIAD	#15, 36" X 36"	24" O.C.	FULL HEALTHY GROWTH
* AIM	2	ALCANTAREA IMPERIALIS	DWF. YAUPOH HOLLY	#3, 14" X 14"	24" O.C.	FULL HEALTHY GROWTH
* IVO	30	ILEX VOMITORIA				

## GROUNDCOVERS

SYM.	QTY	BOTANICAL NAME	COMMON NAME	SIZE	SPACING	REMARKS
* ELI	76	ERINODEA LITTORALIS	BEACH CREEPER	#3, 16" SPD.	24" O.C.	FULL HEALTHY GROWTH
* LMO	170	LIRIOPE MUSCARI	GREEN LIRIOPE	#3, 14" X 14"	18" O.C.	FULL HEALTHY GROWTH
* OPJ	52	OPHIPOGON JAPONICUM	MONDO GRASS	#1, 10" X 10"	12" O.C.	FULL HEALTHY GROWTH

## MISCELLANEOUS

MULCH: 2-3" SHREDDED CYPRESS MULCH  
SOD: ST. AUGUSTINE 'FLORITAM'

IRRIGATION NOTE: CONTRACTOR SHALL PROVIDE 100% COVERAGE FOR ALL NEW LANDSCAPE AND LAWN AREAS

\* DENOTES NATIVE WATER WISE PLANT

## LANDSCAPE DATA TABLE

TOTAL SITE AREA:	*13,000 S.F.	0.3 AC.
ZONING (APPLICABLE CODE 155.5203 C)	RM-20 MULTI-FAMILY RESIDENCE	
	REQUIRED	PROVIDED
%	%	
TOTAL LANDSCAPE AREA	3,250 S.F.	25% 3,366 S.F.
MIN. TREES PER LOT (1 PER 3,000 S.F.)	5 TREES	**5 TREES
50% @16' HT.		
MIN. SHRUBS PER LOT (5 PER 3,000 S.F.)	22 SHRUBS	297 SHRUBS
STREET TREES - R.O.W. LANDSCAPE		
TREES IN R.O.W. (1 PER 40 L.F.)	3 TREES	3 TREES
S.E. 11TH STREET (100 L.F.)		

\*DOES NOT INCLUDE R/W DEDICATION

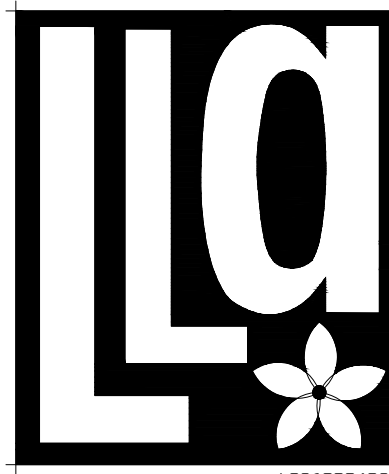
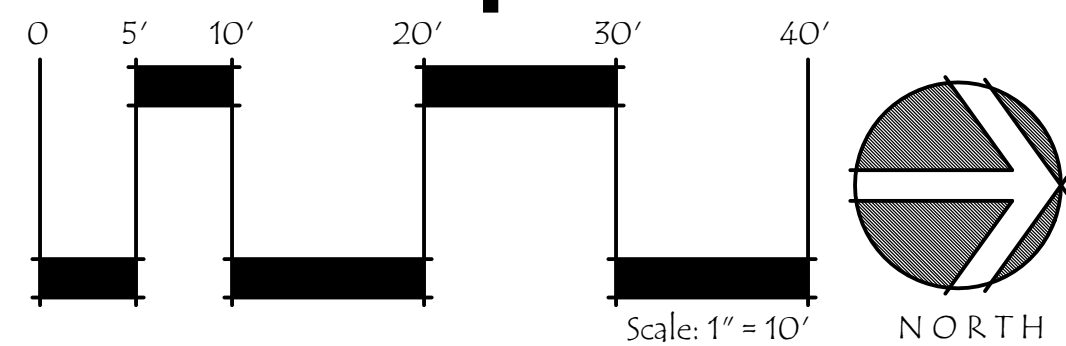
\*\*INCLUDES 2-SATIN LEAF TREES, 1-SILVER BUTTWOOD TREE & 2 EXISTING PALMS



Know what's below  
Call before you dig.

REFER TO SHEET LP-2 FOR PAINT LIST, PLANTING DETAILS AND SPECIFICATIONS

## Landscape Plan



Litterick  
Landscape  
Architecture

2740 SW Martin Downs Blvd. #199  
Palm City, FL 34990  
561-719-3876  
JasonLA1677@yahoo.com

Project Name

Pompano Beach Townhomes  
3214 S.E. 11th Street, Pompano Beach, Florida

Landscape Architect of Record

Jason M. Litterick, RLA  
(LA0001677)

Scale: 1" = 10'-0"

Designed: JML  
Drawn: JML  
Approved: JML  
Date: 5/8/26  
Job no.  
Revisions:

Sheet No.

LP-1